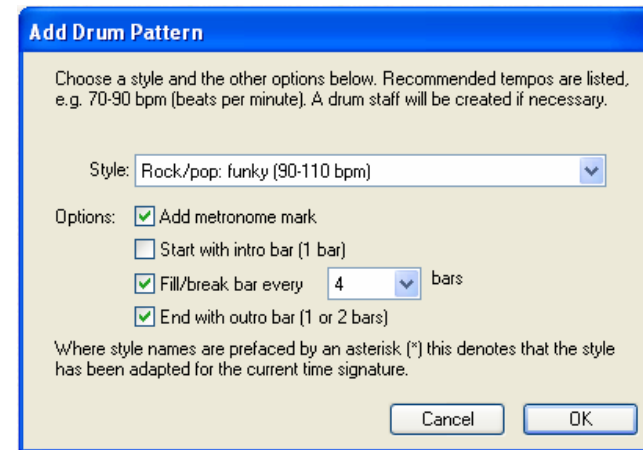
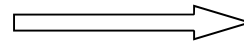
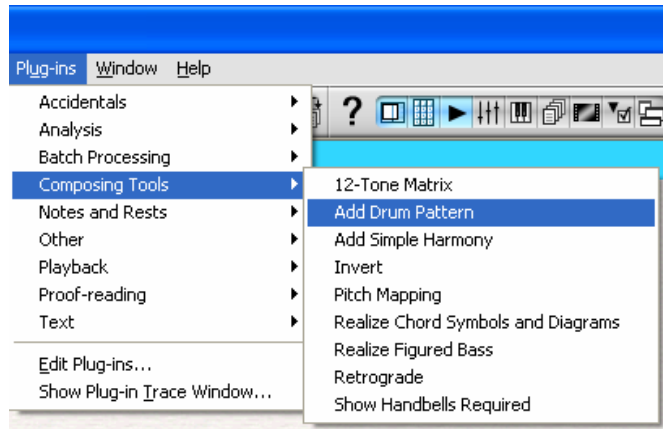


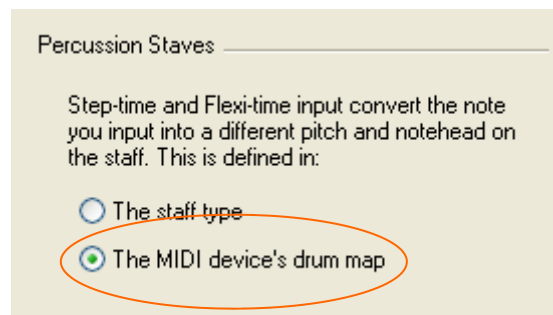
Sibelius 4

Adding drum notation in Sibelius 4

The fastest way to add drum notation to Sibelius 4 is to use the plug-in!



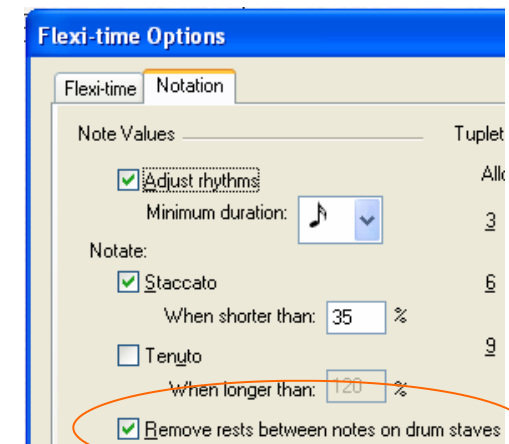
You can also add it live from your MIDI keyboard using Flexitime, but check these settings for best results:



Go to Preferences (File > Preferences or Sibelius > Preferences) and click on *Note Input* to set Percussion staves to use the MIDI device's drum map.



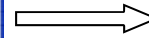
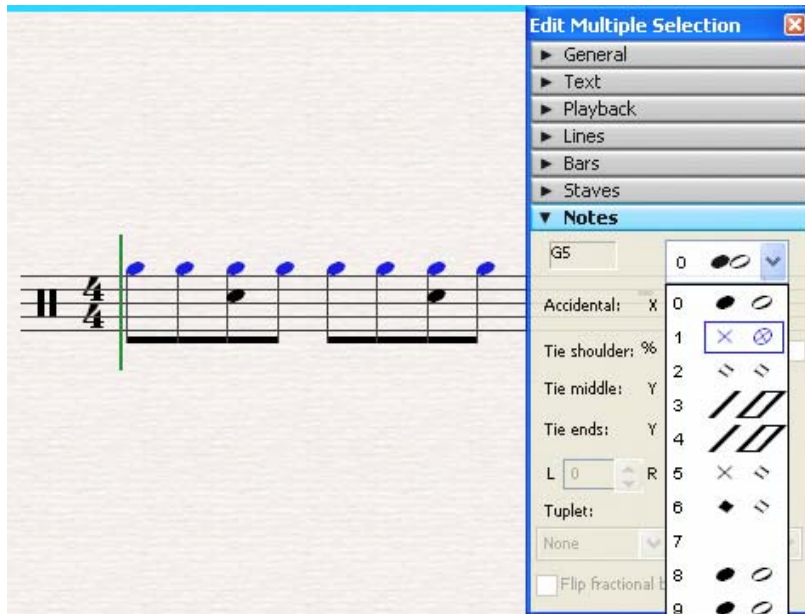
Flexi-time options are found at Notes > Flexi-time Options.



Sibelius 4

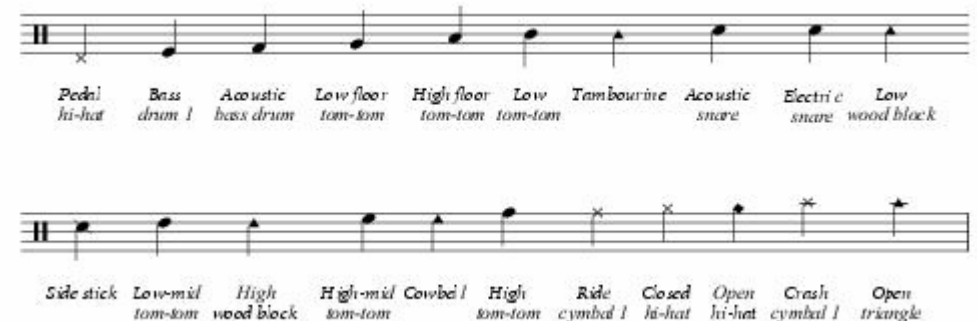
Adding drum notation in Sibelius 4

If you need to put in notation manually, add first any notes you want to be stems up (even though they will go in stems down) in voice 1 (blue notes).



You will need to manually change any noteheads to get the correct playback sound. If you're not sure which notehead tells the drummer to play which drum, see the staff to the right.

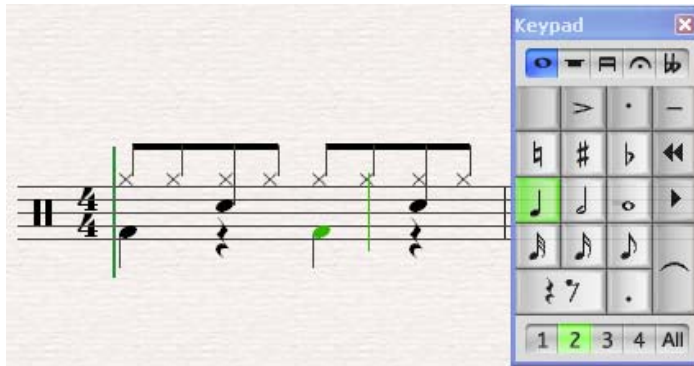
There is more information on editing drum maps in the Sibelius Reference Guide on page 130 or by searching for "drum set" in the online reference under the Help menu.



Sibelius 4

Adding drum notation in Sibelius 4

Next change to voice 2 (green notes) by clicking on the keypad or by typing Alt-2. Now put in stem-down instruments like the bass drum (and you will see the stem-up instruments jump up correctly!).



Finally, repeat your rhythm by highlighting the bar and pressing "R" for Repeat!



You can also use repeat bar symbols, as is outlined in the reference under 4.4 Repeats.